

Agro Food Park the 19th of
December 2016

**Irene Wiborg &
Camilla Vestergaard**

**SEGES, THE DANISH NATIONAL ADVISORY SERVICE FOR
AGRICULTURE
-ENVIRONMENTAL REGULATION WITH NEW PERSPECTIVES**

STØTTET AF
promilleafgiftsfonden
for landbrug



NEW SEGES

**Vi skal fagligt
mere i dybden**



**Vi skal arbejde
tværgående**



**SEGES VIL VÆRE VERDENS DYGTIGSTE
OG
MEST ENGAGEREDE
INNOVATIONSVIRKSOMHED -
I KRYDSFELTET MELLEM
LANDBRUGSFORSKNING
OG LANDBRUGSPRODUKTION.**

Tværgående funktioner



Dorthe Laursen
Skade & Ansvar
DLBR sekr.



Camilla Brehm Suhr
Koncern HR &
Organisations-
udvikling



Anne-Marie Hansen
Koncernledelses-
sekretariatet



Peter Enevoldsen
Koncern IT



Laila Østergaard
Fris
Projekt- &
Forretningsupport



Kirsten Klitgaard
Projektkontoret

Medlemsforhold &
Koncern-
kommunikation Vest



Anne
Arnhung



Lars Daugaard
Koncern Økonomi & Service



Ejnar Schultz
Innovation



Ivar Ravn
Business



Trine
Barrett
Husdyr-
Innovation



Torsten
Gruhn
Erhvervs-
økonomi



Hans
Thysen
Anlæg &
Miljø



Jens
Elbæk
Plante-
Innovation



Kirsten
Holst
Økologi
Innovation



Anders
Vernerisen
Avl &
Genetik



Jakob
Lave
Future
Farming



Anett Skov
Marcussen
Jura & Skat



Bent
Nielsen
Veterinær &
Kvalitetsforhold



Jens
Bligaard
Digital



Susanne
Ejby
Marketing &
Fagkommunikation



Jakob
Lave
Kompetencer
& Vækst



Sektordirektør for
Kvæg
Gitte Grønbæk



Sektordirektør for Svin
Christian Fink Hansen

Sektordirektør for
Planter



Sektorchef for Økologi
Kirsten Lund Jensen



Sektorchef for Økonomi
& Virksomhedsledelse
Anett Skov Marcussen



Anlæg & Miljø

Anlæg &
Produktionsstyring
Kent Myllerup

Miljøteknologi
Anders Leegaard
Riis

Miljø & Land
Irene Wiborg

Miljø & Virkemidler

Natur
Heidi Buur Holbeck

Arbejdsmiljø
Helle Domino



PlantInnovation

Gødningsteam
Leif Knudsen

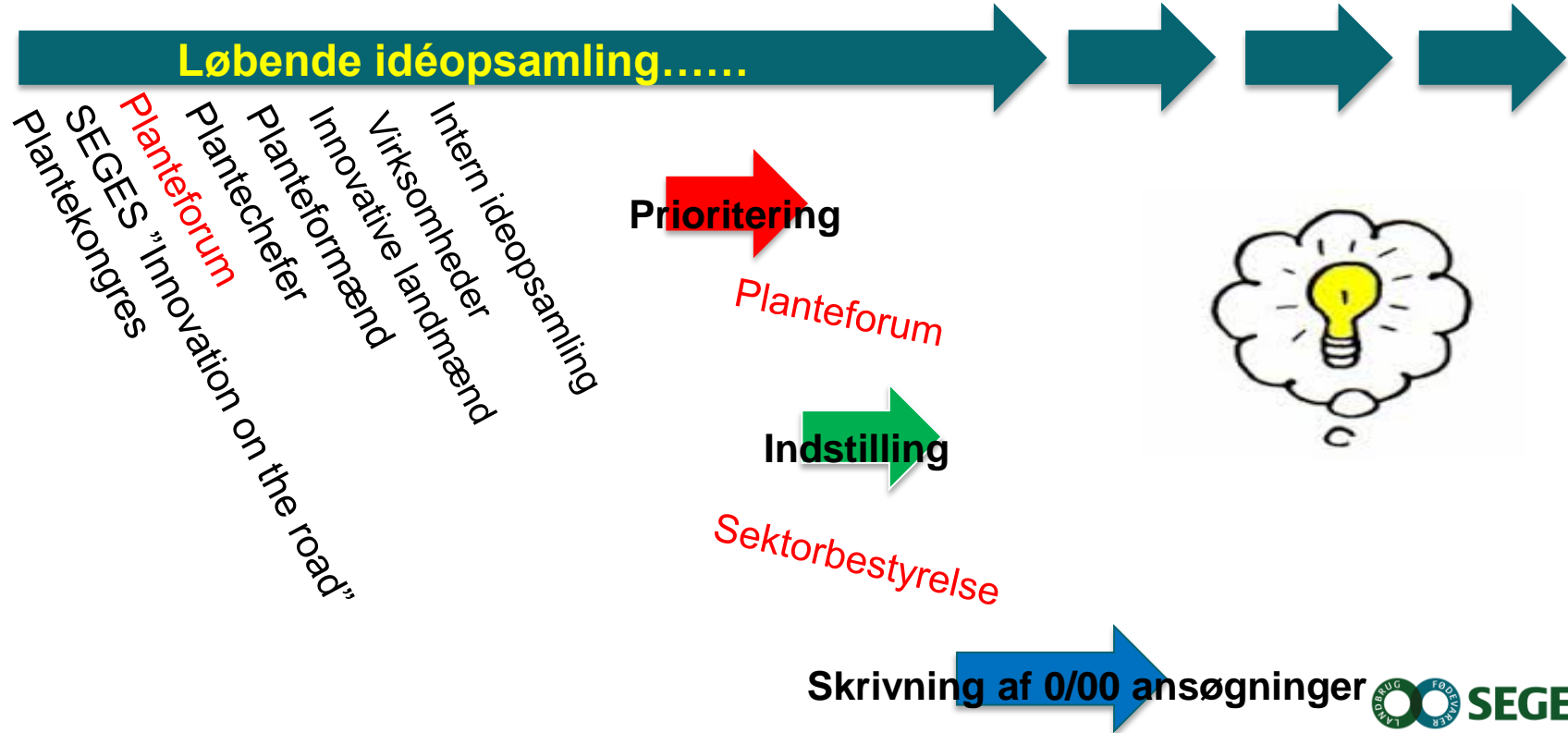
Planteværnsteam
Poul Henning
Pedersen

Regelteam
Jon Birger Pedersen

Afgrødeteam

Bioenergiteam
Torkild Qvist
Frandsen

SEGES INNOVATIONSPROCES

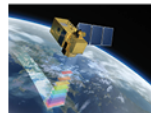


WE OFFER SOLUTIONS FOR THE AGRICULTURE AND FOOD SECTOR OF TOMORROW



innovation
business
services

CropSat.dk
See your field crop
via satellite



Google glasses
Data – right where you are



FutureCropping
Solutions for precision farming
and environmental technology



Ear tag scanning
Register via the SmartKoen app



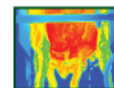
Automatic yield measuring
Optimize your roughage production



PattegriseLIV
App to sharpen you attention
in the farrowing pen

Courses and consultancy
Courses with
a practical
approach

Thermography
Discover errors,
energy losses and disease



Experts
Responses and
consultations prior
to legislative work



CHALLENGES AND PERSPECTIVES FOR THE ENVIRONMENT

- Focus on ground water
- Climatic conditions/restrictions
- Environmental regulation and targeted measures
 - Water plans
- Nature and land management
 - Nature plans
- Ongoing Projects in collaborative partnerships

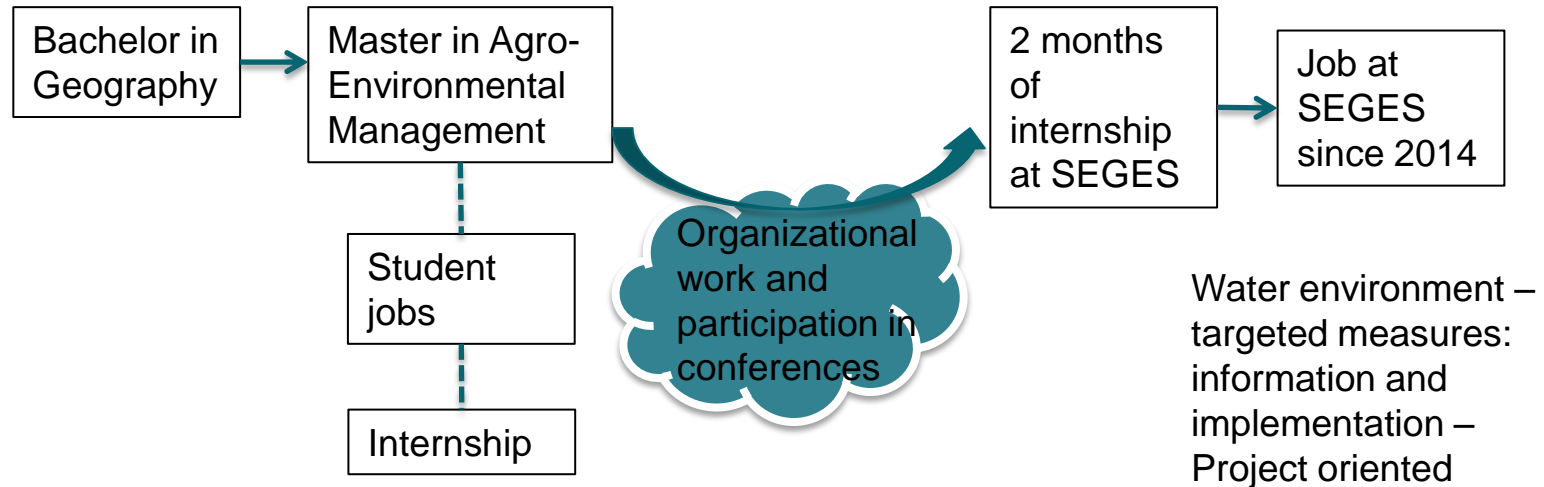
**AGRO
FOOD»
»PARK®**

Development plan 2030



FROM UNIVERSITY TO JOB

- Personal experience



ENHANCED COOPERATION WITH UNIVERSITIES AND STUDENTS

- Together we can generate new knowledge
- We often work on long term projects – with your efforts we can get faster into gear (implementation perspective)
- SEGES can be a co-leader on some of your thesis (45-60 ECTS) on subjects related to our daily work
- SEGES has partners in USA, Minnesota where we are able to arrange to months of internship for you (in case of field work at some of their experimental sites)

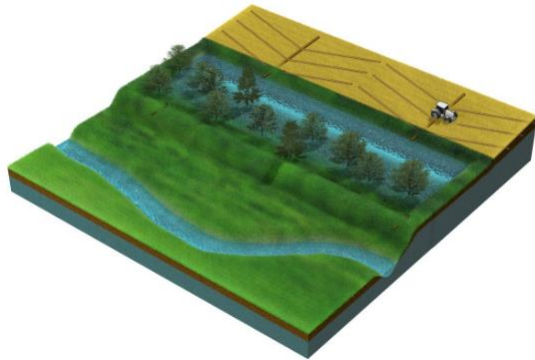
WE NEED YOU PERSPECTIVES

- How do you like to enhance your understanding of- and cooperation with the agricultural sector/food industry??
- We would like your input to enhanced cooperation:
 - What will motivate you to do a Master Thesis in collaboration with a company? (The subject, the facilities, trip to US etc.?)
 - Do you have experiences that we can make use of from other internships, bachelor thesis or work experience?

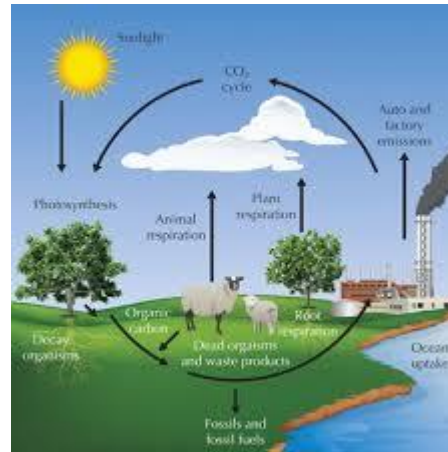
WORK OF THE COMING YEARS

- AGRICULTURE, NATURE AND ENVIRONMENT

- Development and implementation of targeted measures (“drænvirkemidler” in Danish) to local reduction of nutrients



- Closing the loop – closed nutrient cycle (carbon optimization in soil and emission based regulation) – Horizon Project



- Planning for an optimized production and protection of drinking water - Horizon Project



- WaterCog Governance – local water plans – bottom-up



- The farmer as nature planner – facts and myths about nature



CONTACT

- Irene Asta Wiborg: iaw@seges.dk
- Camilla Vestergaard: clhv@seges.dk

Thank you all for listening –
good luck with your future work